



**2013 SOUTHERN CALIFORNIA USATF GRAND PRIX
GREEN RUNNING EVENTS ECO 5k
At Elysian Park, Los Angeles**

Saturday, October 12, 2013

SCHEDULE OF EVENTS: *The course consists of a mix of asphalt, packed dirt, and grass. See attached course map.*

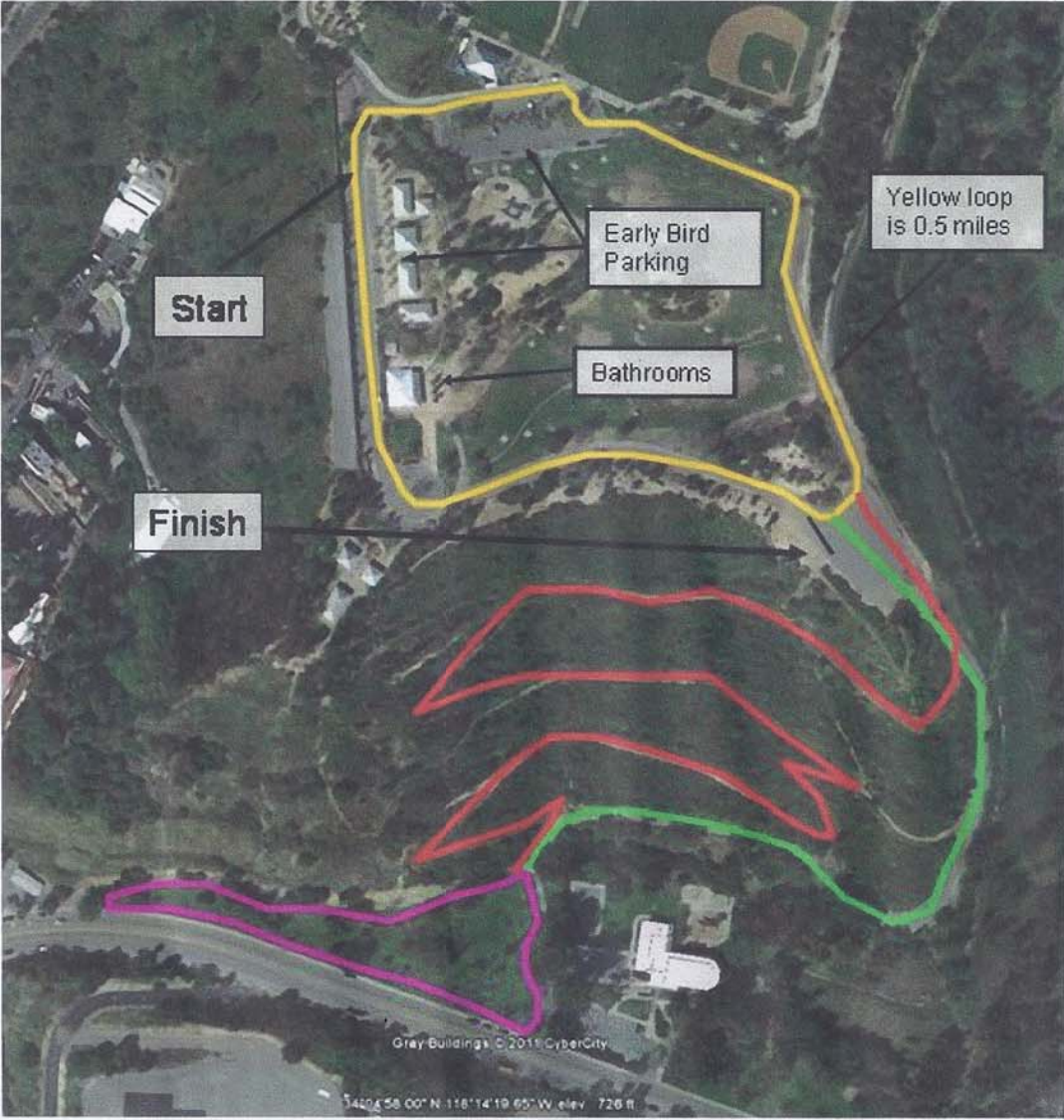
8:00 a.m. **Combined 5k Race**

ENTRY FEES & USATF MEMBERSHIP:	<ul style="list-style-type: none"> ▪ Pre-Meet Entry Fee: \$35.00 per person ▪ Pre-Meet Entry Fee: \$80.00 per four person team ▪ Bring Your Kids. Pre-Meet Entry Fee (14 & Under): \$15.00 per small person. ▪ Race-Day Entry Fee: \$40.00 per person <p>All competitors, to qualify for Grand Prix points must, at the time of the event, be 2013 members of USA Track & Field. Athletes can register on-line at www.scausatf.org or purchase a USATF membership at the meet for the annual fee of \$30.00.</p>
ENTRY PROCEDURE:	<p>Pre-meet entry deadline is October 10, 2013. Register on-line at www.greenrunningevents.org.</p>
DIRECTIONS, AWARDS AND OTHER INFORMATION:	<ul style="list-style-type: none"> > Off either Interstate 5 or the 110 Freeway take Stadium Way to Angels Point Road. Follow Angels Point Road to the top of the hill to the baseball fields. At baseball fields park on the street or in baseball fields parking lot. > Prizes for the top 3 male and female overall winners. > Recycled award medals for the top 3 male and female athletes in each 10 year age division.

Race #4 in the
SOUTHERN CALIFORNIA USATF
2013 CROSS COUNTRY GRAND PRIX
\$4,000 in Grand Prix Prize Money*

* Prize Money will be paid three deep to Men's and Women's Open, Masters (40-49) and Masters (50+). Points will be awarded in Open, 40-49 and 50+ for places 1-25 in each of the five races, with the Championship being worth double (25 points for 1st through 1 point for 25th in races #1-#5 and 50 points for 1st through 2 points for 25th in the Championship). Athletes count their best two results from races #1-#5 along with the Championship result to determine their place in the grand prix. Ties are broken by the higher place in the Championship. Athletes must be current USATF members at the time of each race in order for that race to count toward the grand prix.

For details regarding the grand prix prize money payout, further grand prix rules and for entry information for specific races, please visit www.scausatf.org or contact the SCA/USATF Open Cross-Country Committee Chair, Mike Mahurin, at (310) 384-6974 or at edvird@yahoo.com.



- Yellow – two and a half loops
- Green – down the hill
- Pink – around the grass field
- Red – up the dirt switchback trail
- Yellow – one loop
- Black – finish chute